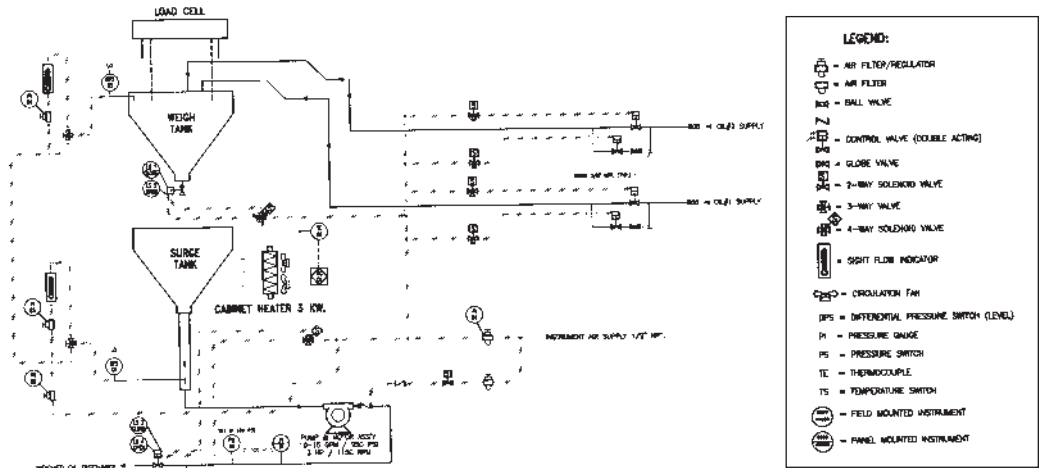


MIXER OIL WEIGH SYSTEMS & DAY TANKS



Model OWS-4 shown complete with optional remote control panel



Typical OWS-4 Schematic

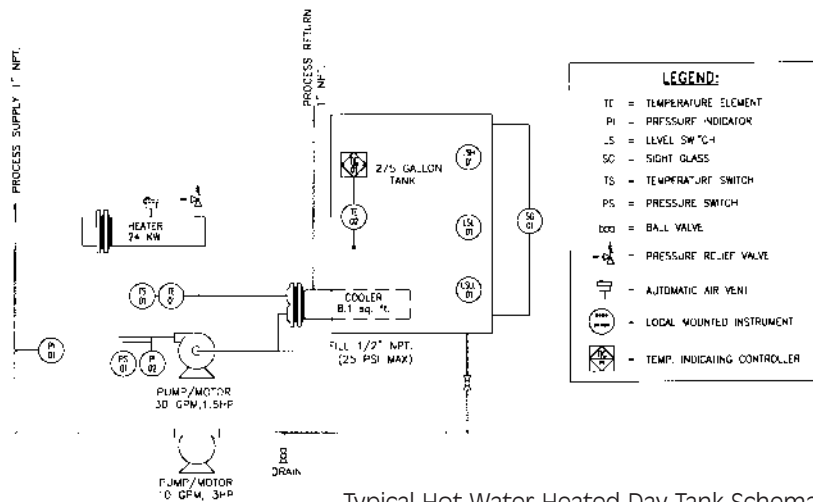
| Model | Oils | Hopper Weigh Capacity (Gallons) | Pump Rate (GPM) | Maximum Delivery Pressure (PSI) | Dimensions (W x L x H) | Shipping Weight (lbs.) | FLA @ 460V ⁴ |
|-------|------|---------------------------------|-----------------|---------------------------------|------------------------|------------------------|-------------------------|
| OWS-1 | 1-16 | 1 | 5 | 250 | 24"x42"x72" | 1000 ¹ | 4 |
| OWS-2 | 1-16 | 6 | 10 | 250 | 36"x60"x72" | 1200 ² | 6 |
| OWS-3 | 1-16 | 13 | 15 | 250 | 36"x60"x72" | 1200 ² | 8 |
| OWS-4 | 1-16 | 18 | 20 | 250 | 36"x60"x90" | 1400 ³ | 8 |
| OWS-5 | 1-16 | 33 | 30 | 250 | 36"x60"x90" | 1600 ³ | 12 |

¹ Add 35 lbs for each oil feed

² Add 50 lbs for each oil feed

³ Add 75 lbs for each oil feed

⁴ Add 7 amps to FLA for electric heated units



Typical Hot Water Heated Day Tank Schematic



| Model | Tank Size (Gallons) | Heater Size (Kw) | Pump Rate (GPM) | Dimensions (W x L x H) | Shipping Weight (lbs.) | FLA @ 460V |
|---------|---------------------|------------------|-----------------|------------------------|------------------------|------------|
| TK1-250 | 250 | 24 | 5-30 | 48"x90"x60" | 3000 | 45 |
| TK2-500 | 500 | 48 | 5-30 | 48"x90"x90" | 4500 | 75 |



38241 Willoughby Pkwy., Willoughby, Ohio 44094-7582
 (440) 918-0505 • Fax (440) 918-0606 / 918-0707
 www.budzar.com • E-mail: sales@budzar.com



OIL WEIGH SYSTEMS

AUTOMATIC OIL WEIGH SCALES AND DAY TANK SYSTEMS



MWS Series Mixer Oil Weigh Systems

BTU MWS Series Mixer Oil Systems automatically meter up to sixteen different process oils to rubber batch mixers with high speed and accuracy to ensure uniform batch characteristics, speed cycle times, and reduce scrap. The MWS Series combines design simplicity with extremely reliable components, making them simple to install, operate, and maintain.

The MWS System is enclosed to withstand demanding mixing-room atmospheres and prevent contamination. The enclosure can be heated with steam or electricity to maintain proper oil temperature and accurate flow. Control can be provided by an on-board, fully programmable, weigh controller or by your distributed master batch control system.

Budzar Day Tanks are available in a range of sizes and options. Options include delivery pump flow rate and pressure, heating, insulation, and level controls. The Day Tank System controls are designed to be integrated with the Weigh System controls.

Budzar designs and manufactures standard and specialized equipment for the rubber processing industry. Our engineers have extensive experience in process control. We take the time to understand your current and future needs and design a solution targeted at high quality and fast payback.



ENGINEERING THE FUTURE FOR THE RUBBER PROCESS INDUSTRY

engineering
PRECISION

EXCELLENT RETURN ON INVESTMENT

- Each Budzar unit is designed to maximize the productivity of your process. Budzar quality and reliability provide excellent value for each dollar invested.
- Reliable process control improves process consistency, reduces scrap, speeds start-up, and increases production rates.

LOW-COST, SIMPLE OPERATION AND MAINTENANCE

- Programmable controls with communications to your DCS or operate as a slave to your DCS.
- A combination of fast and slow-speed feed valves provide fast cycle times by delivering most of the oil at high speed. The system then automatically switches to the slow speed valve to top off the weighment to the mixer.
- All valves are single-acting pneumatic type with spring return for quickness of operation and reliability.
- The dust tight hopper enclosure prevents process oil contamination.
- The weigh scale is temperature and vibration isolated for precise measurement.
- Positive displacement pump and motor assembly for high pressure output.

QUICK AND EASY INSTALLATION

- Single-point connections for all utilities.
- All units are factory tested prior to shipment.



process
TEMPERATURE
control